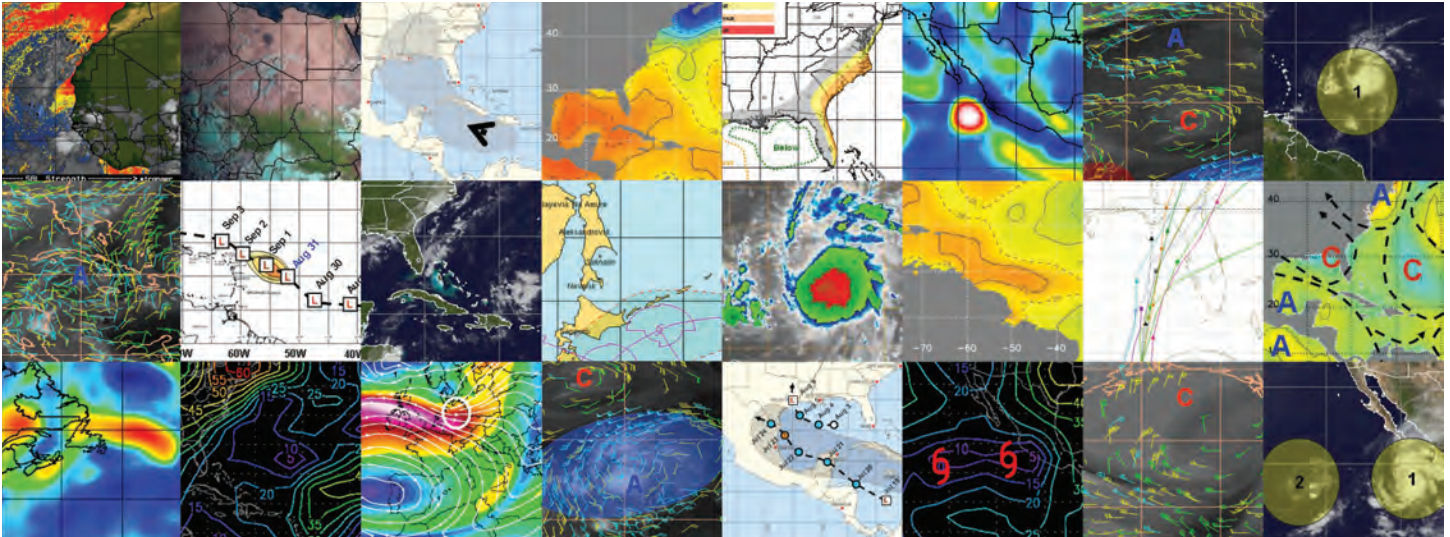


Planalytics[®] Severe Weather Service

Global Forecasting, Monitoring, Alerting



The Problem with Pre-Season Forecasts

Storm risk assessment based largely on climatology data, recent storm history, model scenarios, and assumptions has not proven to be very accurate or helpful in anticipating severe storm losses in particular geographic regions in any given year. Long-range seasonal storm forecasts, widely available from various sources, are conflicting, too general and subject to frequent revisions to be used for effective pre-season decision making.

The Planalytics Solution

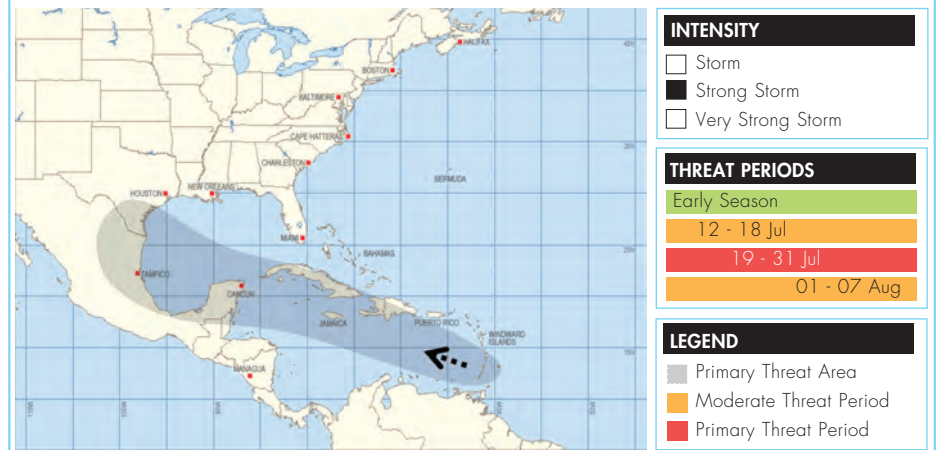
Planalytics' proprietary forecasting models produce unique long-range storm threat forecasts of the timing,

path, and intensity of tropical storms in the Atlantic and Western Pacific, as well as a detailed annual outlook for European windstorms. Pre-season forecasts for the entire tropical season are delivered to clients in January each year and updated, if necessary, in April. These forecasts are used by many clients and have proven to be more reliable than climatology.

The service also includes daily storm monitoring and regular client consultations with a team of senior

meteorologists who specialize in severe weather. Our clients know more and know sooner about the timing, path, and intensity of tropical storms and windstorms, allowing them to gain valuable time and make more informed decisions. Planalytics clients are typically given event alert notices several days prior to the release of government and other private weather service advisories and damage reports.

Pre-Season Threat Forecasts for Atlantic Basin and Western Pacific



PREDICT. PERFORM. PROFIT.

800.882.5881

www.planalytics.com

How active and severe is the coming tropical storm or windstorm season? Which geographic locations are at greatest risk this year?

"Planalytics' Severe Weather Service is an invaluable source of both seasonal and real-time forecast information for both tropical cyclone and winter storm activity. Our use of this information continues to enhance our portfolio management and trading efforts."



"Planalytics provides us with relevant meteorological information before comparable data becomes available in the public domain. Their focus on client support is like having a team of experienced severe weather experts on our own staff."



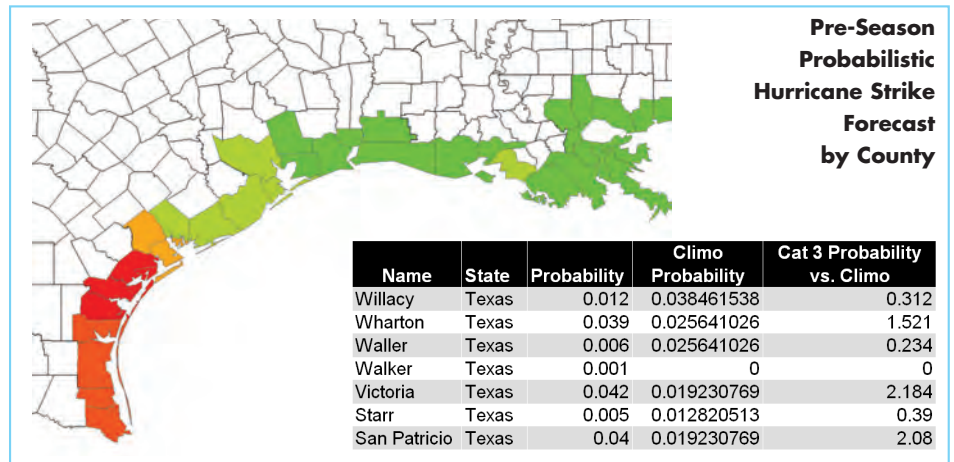
In-Season

- Daily and weekly monitoring and forecasting of high wind events, floods, tornado potential and blizzards.
- Alerting (7- to 14-day lead times)
- Phone/email consults and conference calls as required.

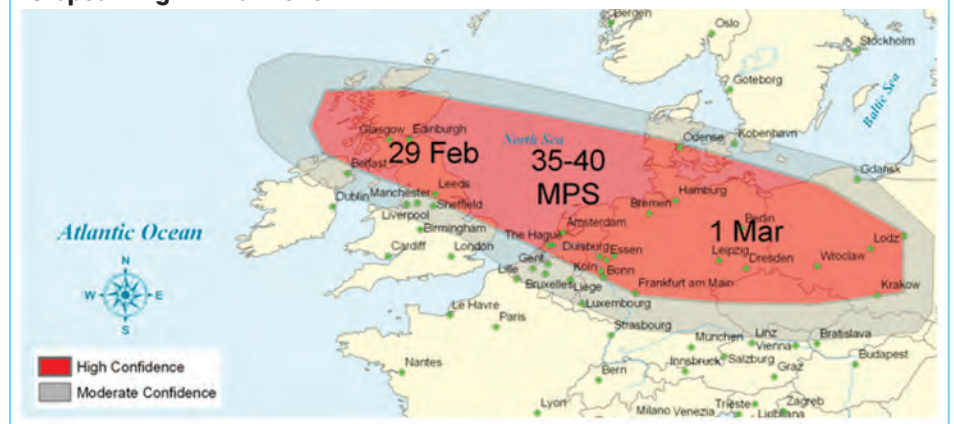
	Pre-Season	In-Season
North America	●	●
Asia	●	●
Europe	●	●
Latin America	●	●
Australia	●	●
Indian Ocean	●	●

European Wind Storms

- Pre-season outlook delivered in October.
- Daily monitoring includes a 7-day rolling forecast of significant wide-spread wind events.
- During significant events, a minimum once-daily synopsis of wind speeds for all affected reporting locations.
- Post-event reports within 3 days after the event include weather analysis, "stats" and damage reports.



European High Wind Alerts



Jim Gagne
Senior Vice President
Planalytics, Inc.
920 Cassatt Road, Suite 300
Berwyn, PA 19312

phone 610.407.2956
fax 610.640.0147

www.planalytics.com